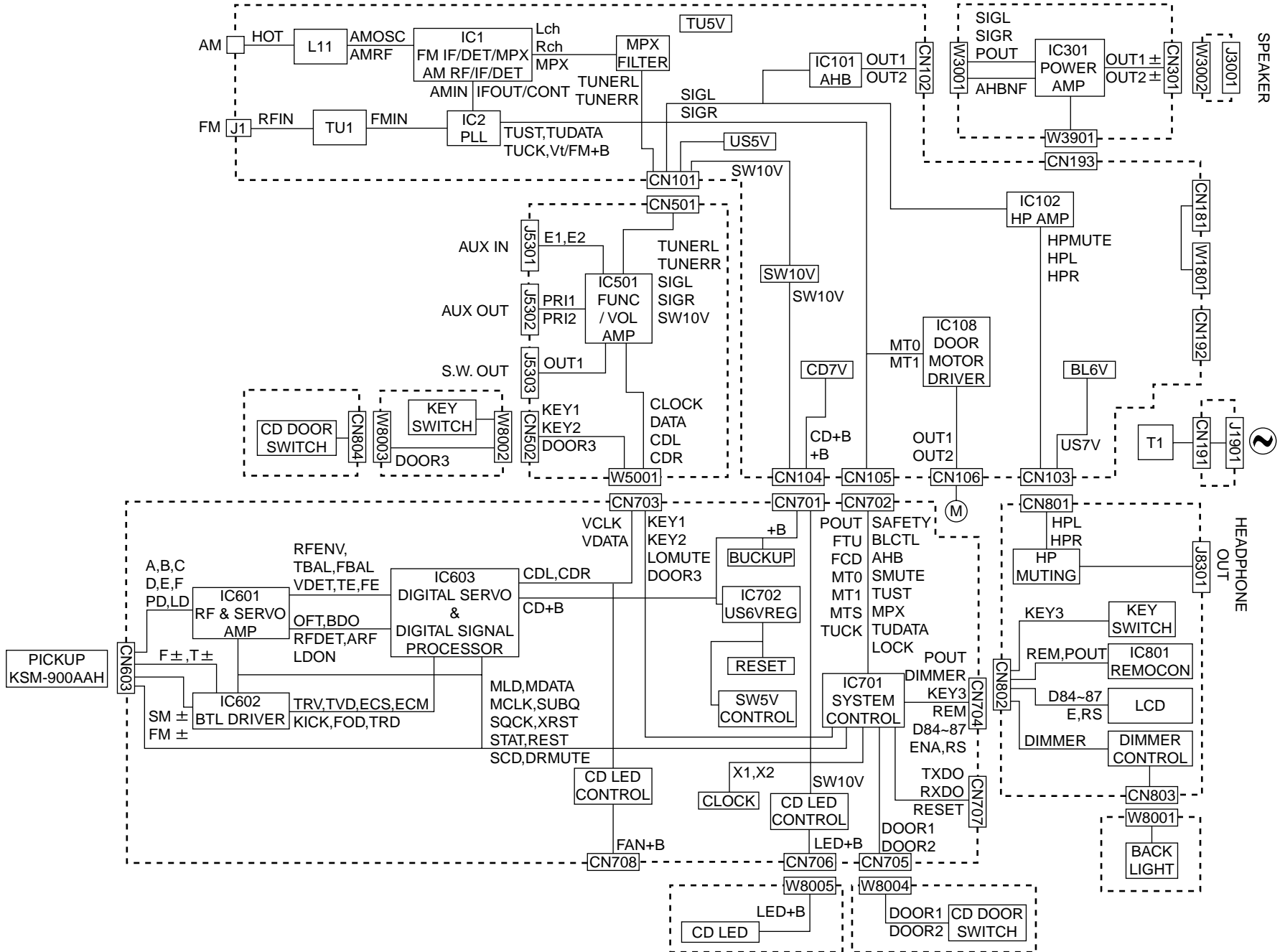


Block diagram

A
B
C

1 2 3 4 5



< MEMO >

Standard schematic diagrams

■ CD servo control section

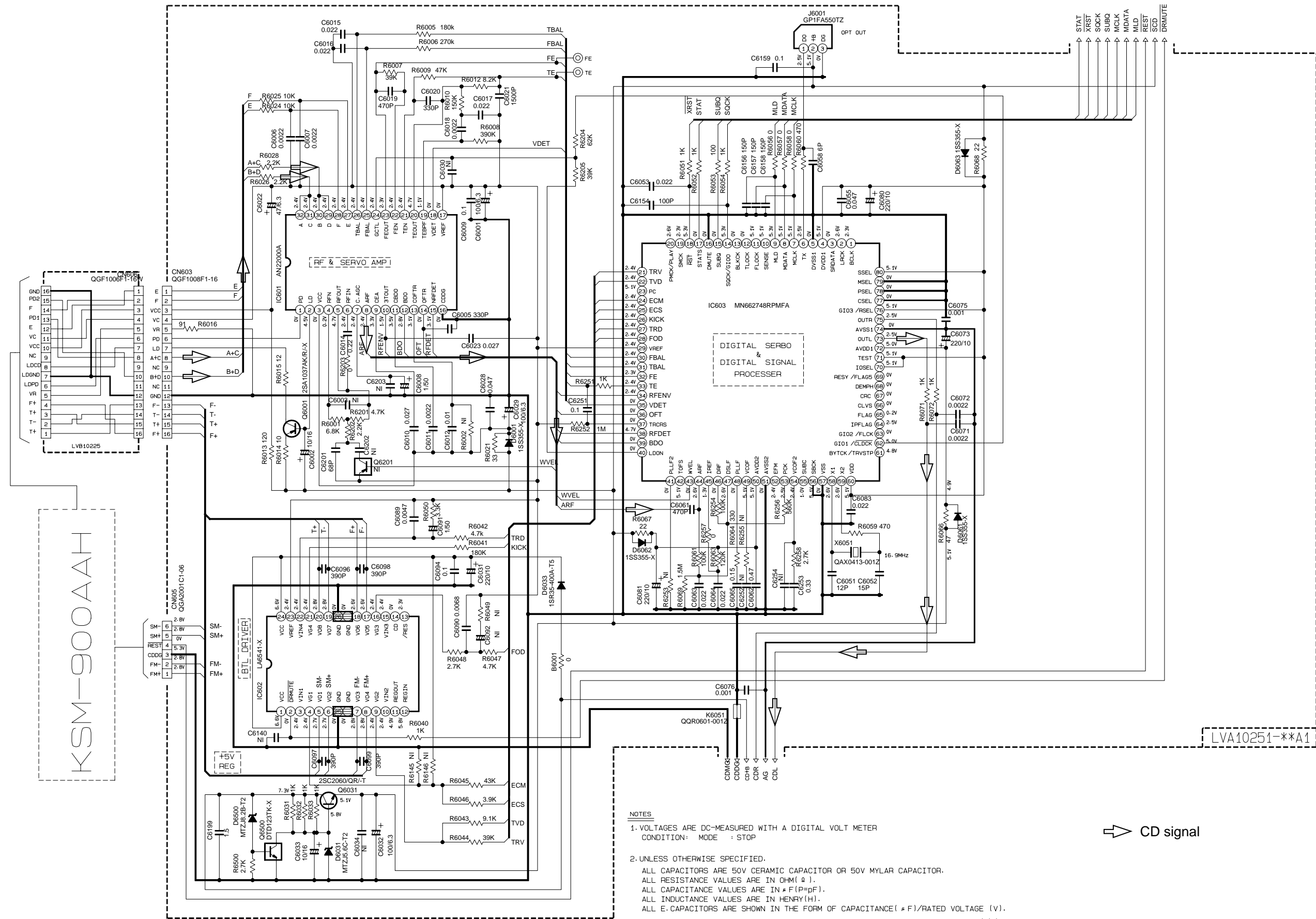
5

4

3

2

1

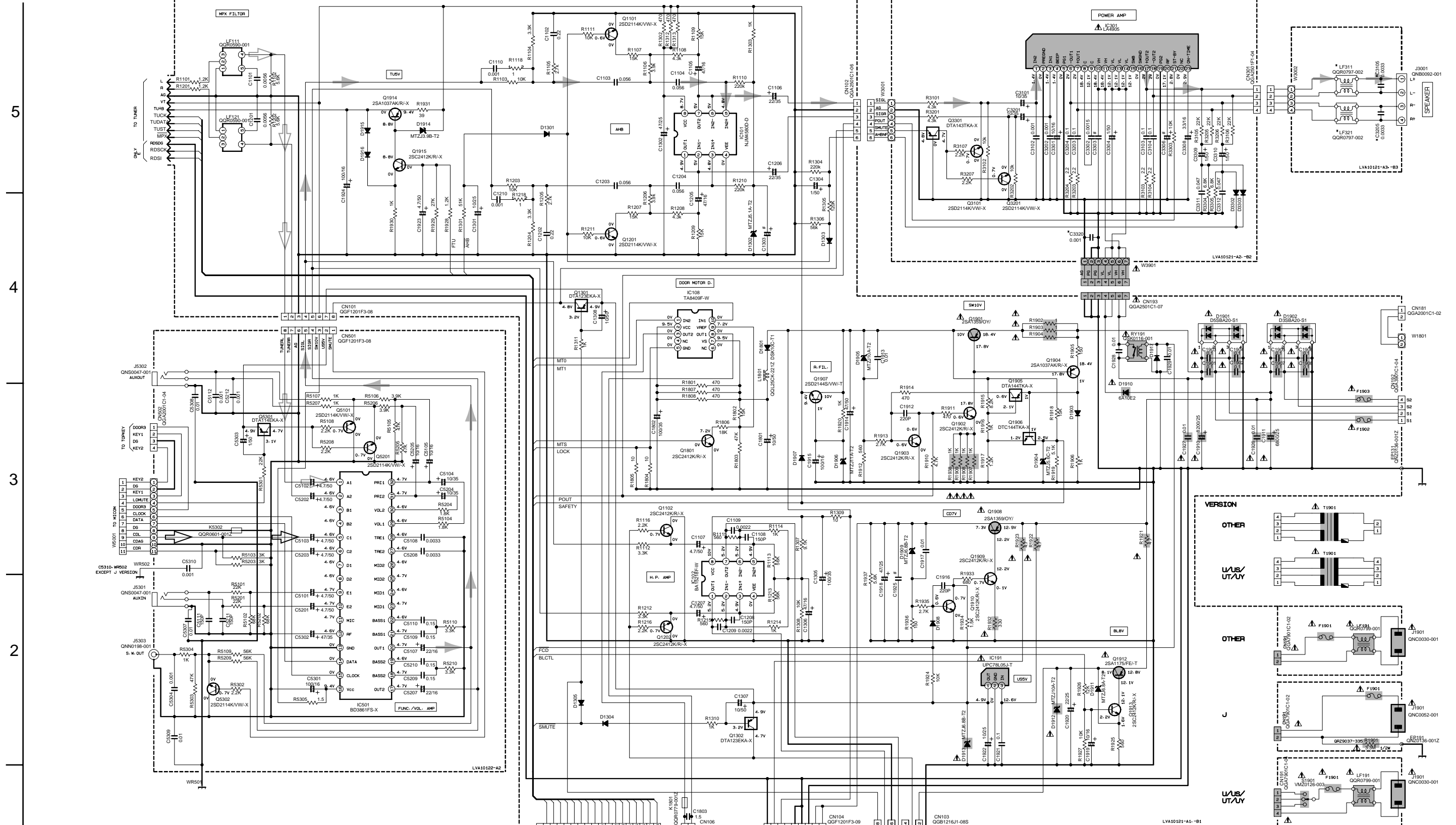


KSM-900AAH

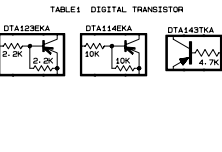
- NOTES**
1. VOLTAGES ARE DC-MEASURED WITH A DIGITAL VOLT METER
CONDITION: MODE : STOP
 2. UNLESS OTHERWISE SPECIFIED.
ALL CAPACITORS ARE 50V CERAMIC CAPACITOR OR 50V MYLAR CAPACITOR.
ALL RESISTANCE VALUES ARE IN OHM (Ω).
ALL CAPACITANCE VALUES ARE IN P (P=pF).
ALL INDUCTANCE VALUES ARE IN HENRY (H).
ALL E. CAPACITORS ARE SHOWN IN THE FORM OF CAPACITANCE (# F) / RATED VOLTAGE (V).

➤ CD signal

Power supply & main circuit section



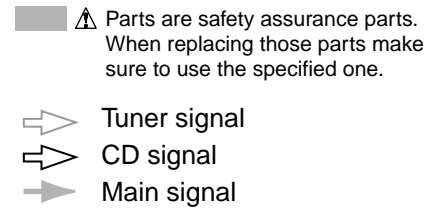
- NOTES**
1. VOLTAGES ARE DC-MEASURED WITH A DIGITAL VOLT METER OR OSCILLOSCOPE WITHOUT INPUT SIGNAL. CONDITION — CD STOP MODE.
 2. UNLESS OTHERWISE SPECIFIED RESISTORS ARE 1/4W ±5% CARBON RESISTOR. ALL RESISTANCE VALUES ARE IN OHM(Ω). ALL CAPACITORS ARE CERAMIC CAPACITOR OR MYLAR CAPACITOR. ALL CAPACITANCE VALUES ARE IN μF(μF). ALL INDUCTANCE VALUES ARE IN mH(mH). ALL E. CAPACITORS ARE SHOWN IN THE FORM OF CAPACITANCE (μF)/RATED VOLTAGE (V). ALL DIODES ARE 1SS133.
 3. *MARKS ARE B/E/EN/EE/UB VERSION ONLY OTHER VERSIONS ARE OPEN OR SHORT



***Marks**

	C1903	C3303	C3306	C1905
FS-SD990	22/35	0.01	100/35	0.01
FS-SD710	↑	↑	↑	↑
FS-SD990	47/25	0.1	47/25	0.022

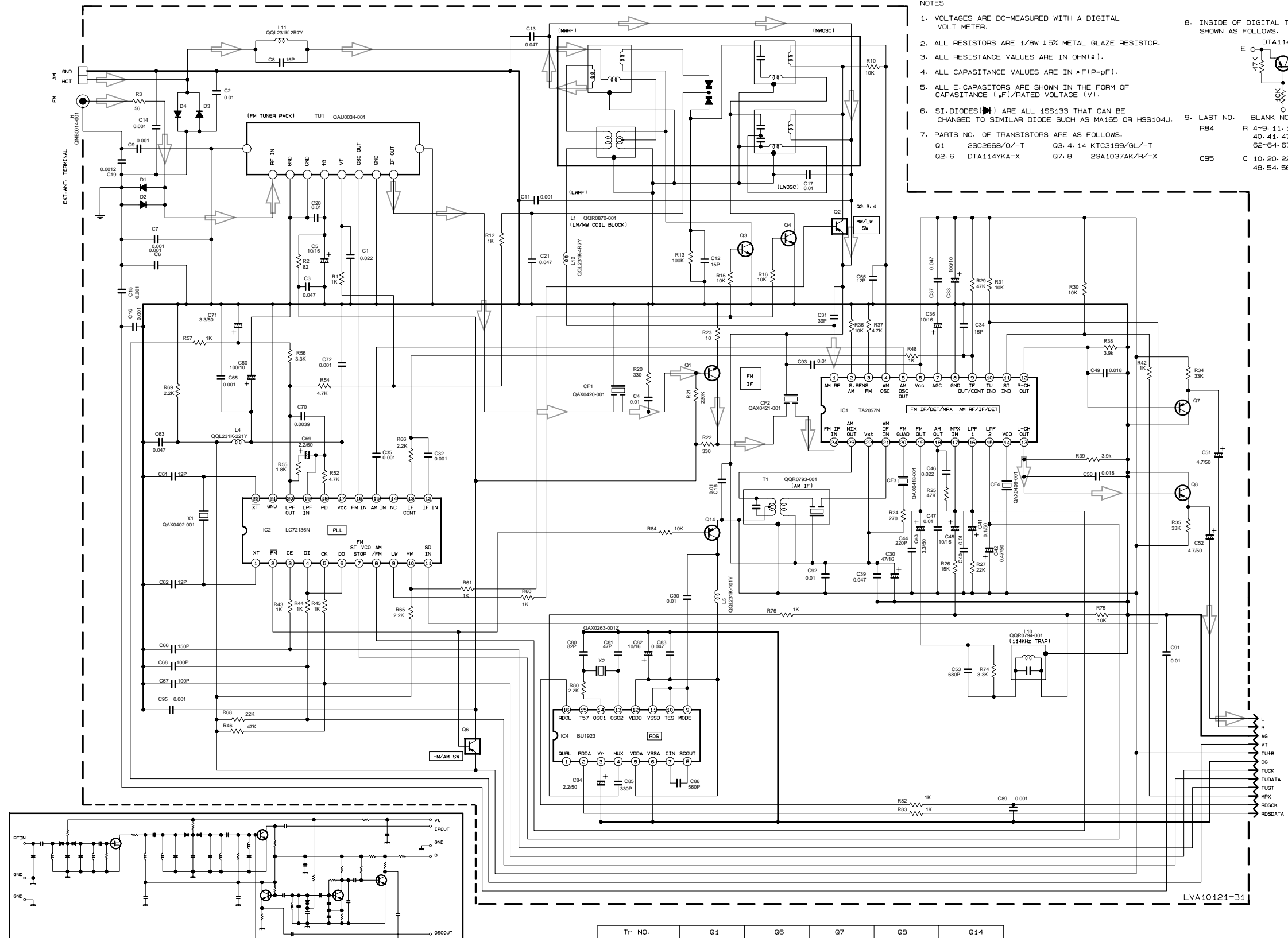
J/C	T1901	F1901	F1902	F1903
B/E/EN/EE/UB	Q0T0286-002	Q0F51E2-190-J1	Q0F51E2-190-J1	Q0F51E2-190-J1
U/L/US/UT/UY	Q0T0286-004	Q0F51E2-190-J1	Q0F51E2-190-J1	Q0F51E2-190-J1
A	Q0T0286-005	Q0F51E2-190-J1	Q0F51E2-190-J1	Q0F51E2-190-J1
U/L/US	Q0T0286-006	Q0F51E2-190-J1	Q0F51E2-190-J1	Q0F51E2-190-J1



5
4
3
2
1

A B C 2-4 D E F G H

Tuner section



- NOTES
1. VOLTAGES ARE DC-MEASURED WITH A DIGITAL VOLT METER.
 2. ALL RESISTORS ARE 1/8W ±5% METAL GLAZE RESISTOR.
 3. ALL RESISTANCE VALUES ARE IN Ω(M).
 4. ALL CAPACITANCE VALUES ARE IN #F(P=pF).
 5. ALL E-CAPACITORS ARE SHOWN IN THE FORM OF CAPACITANCE (μF)/RATED VOLTAGE (V).
 6. SI-DIODES (▶) ARE ALL 1SS133 THAT CAN BE CHANGED TO SIMILAR DIODE SUCH AS MA165 OR HSS104J.
 7. PARTS NO. OF TRANSISTORS ARE AS FOLLOWS.
 Q1 2SC2668/G/-T Q3 4-14 KTC3199/GL/-T
 Q2-6 DTA114YKA-X Q7-8 2SA1037AK/R/-X
 8. INSIDE OF DIGITAL TRANSISTORS ARE SHOWN AS FOLLOWS:
 E C
 47K 10K
 B
 9. LAST NO. BLANK NO.
 R 4-9-11-14-17-19-28-32-33
 40-41-47-49-51-53-58-59
 62-64-67-70-73-77-79-81
 C 10-20-22-29-38
 48-54-56-59-64-73-79-87-88

CONDITION	PIN NO.	1	2	3	4	5	6	7	8	9	10	11	12	13	14	15	16	17	18	19	20	21	22	23	24
IC1 FM NO SIGNAL		2.0	0.5	0	2.0	5.1	5.1	0	0	0.3	5.1	5.1	1.1	1.1	4.4	3.7	3.7	1.4	0	1.3	1.1	2.0	2.0	5.1	2.0
IC1 FM 60dB STEREO		2.0	0.5	0	2.0	5.1	5.1	1.1	0	0.3	0	0	1.1	1.1	4.3	4.1	3.7	1.4	0	1.4	1.1	2.0	2.0	5.1	2.0
IC1 AM NO SIGNAL		2.0	0.5	0	2.0	5.0	5.1	0	0	0.3	5.1	5.1	1.1	1.1	4.5	0.1	0	1.4	1.4	1.5	1.6	2.0	2.0	5.1	2.0
IC2 FM NO SIGNAL		2.4	0	0	5.1	5.0	5.1	3.7	3.7	2.0	3.8	5.1	0	0	0	2.6	5.1	1.0	1.0	3.7	0	2.7			
IC4 FM NO SIGNAL		2.0	2.5	2.5	2.5	5.0	0	2.5	2.5	0	0	0	5.0	2.4	2.4	2.5	2.5								

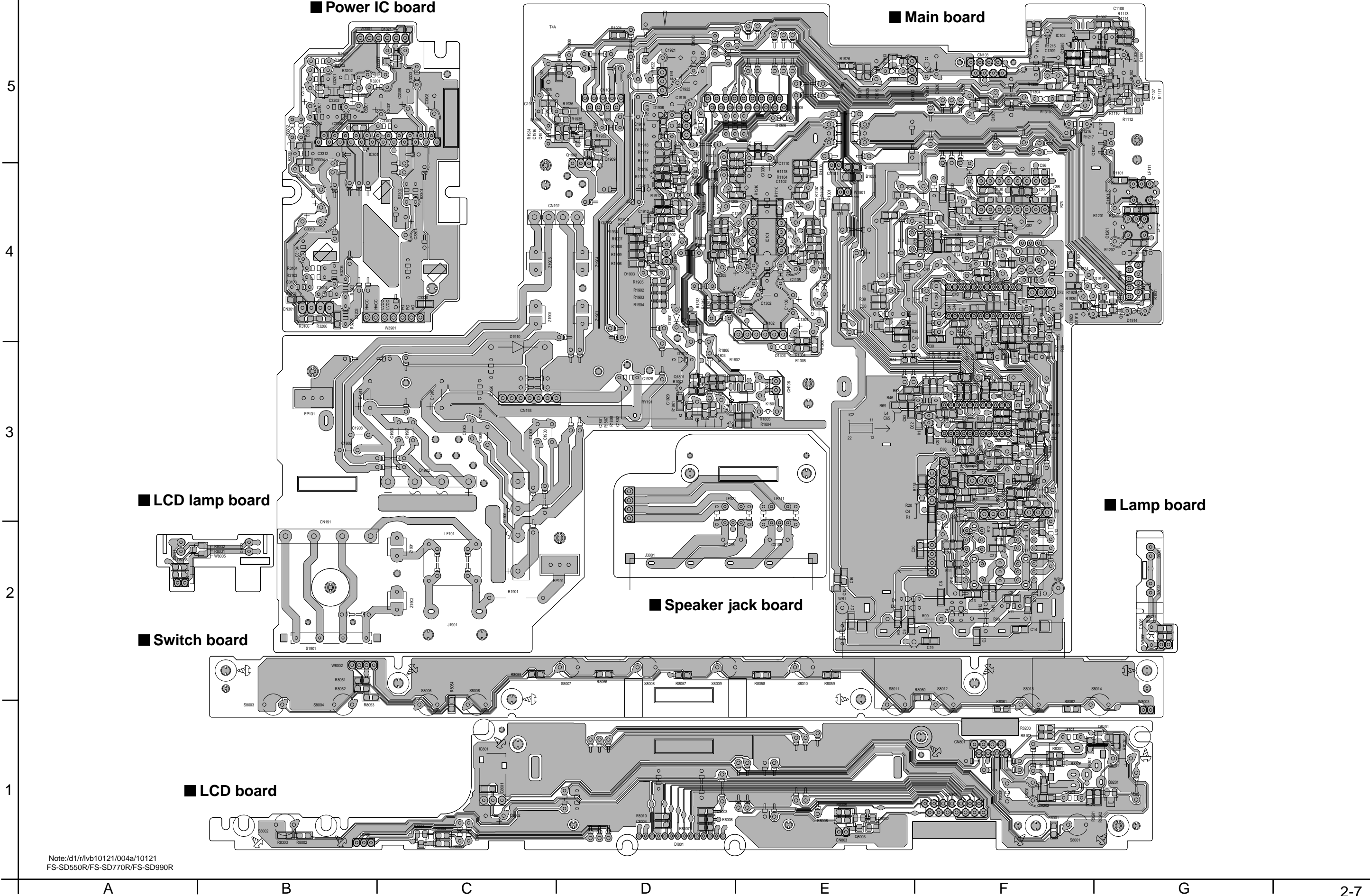
Tr NO.	Q1			Q6			Q7			Q8			Q14		
PIN NO.	E	C	B	E	C	B	E	C	B	E	C	B	E	C	B
FM 87.5MHz NO SIGNAL	0	7.5	0.7	8.8	8.7	0	1.6	0	1.1	1.6	0	1.1	5.1	5.1	4.5
AM 522KHz NO SIGNAL	0	0	0	8.8	0	8.7	1.6	0	1.1	1.6	0	1.1	5.1	0.1	8.7

Tr NO.	Q2			Q3			Q4		
PIN NO.	E	C	B	E	C	B	E	C	B
AM 522KHz NO SIGNAL	2.0	2.0	0.1	0	0	0.7	0	0	0.7
AM 144KHz NO SIGNAL	2.0	2.0	2.0	0	0	0.1	0	0	0.1

➔ Tuner signal

Note: tr/s/jsc/sd550/LVS200295_GNS10002-001A 5/8
 FS-SD550R/770R/990R_B/E/ENEV/UB

Printed circuit boards

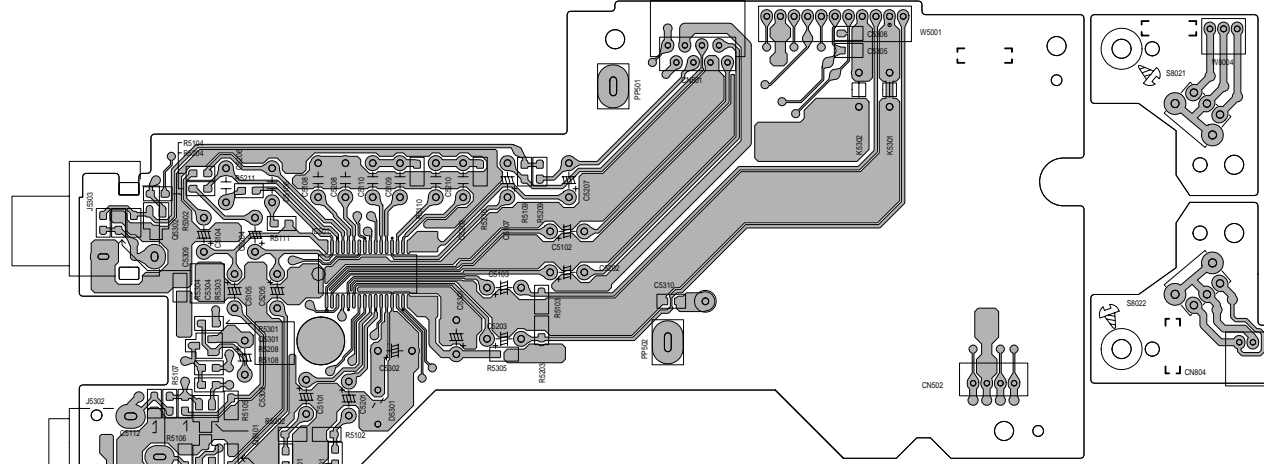
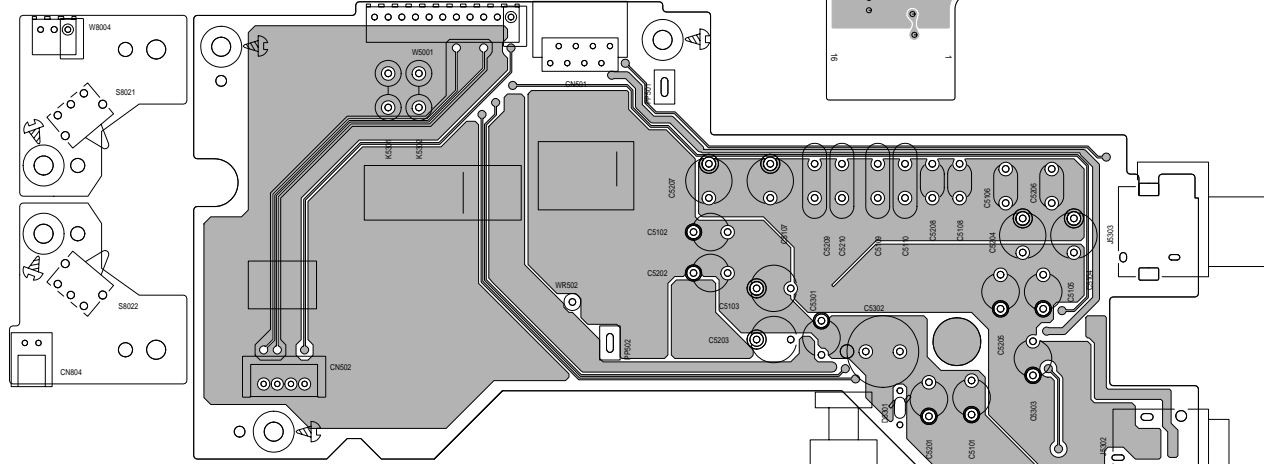
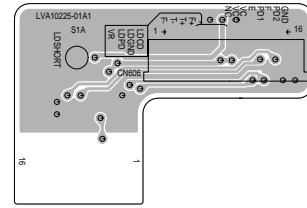


Note: d1/r/l/vb10121/004a/10121
FS-SD550R/FS-SD770R/FS-SD990R

■ Line board (Forward side)

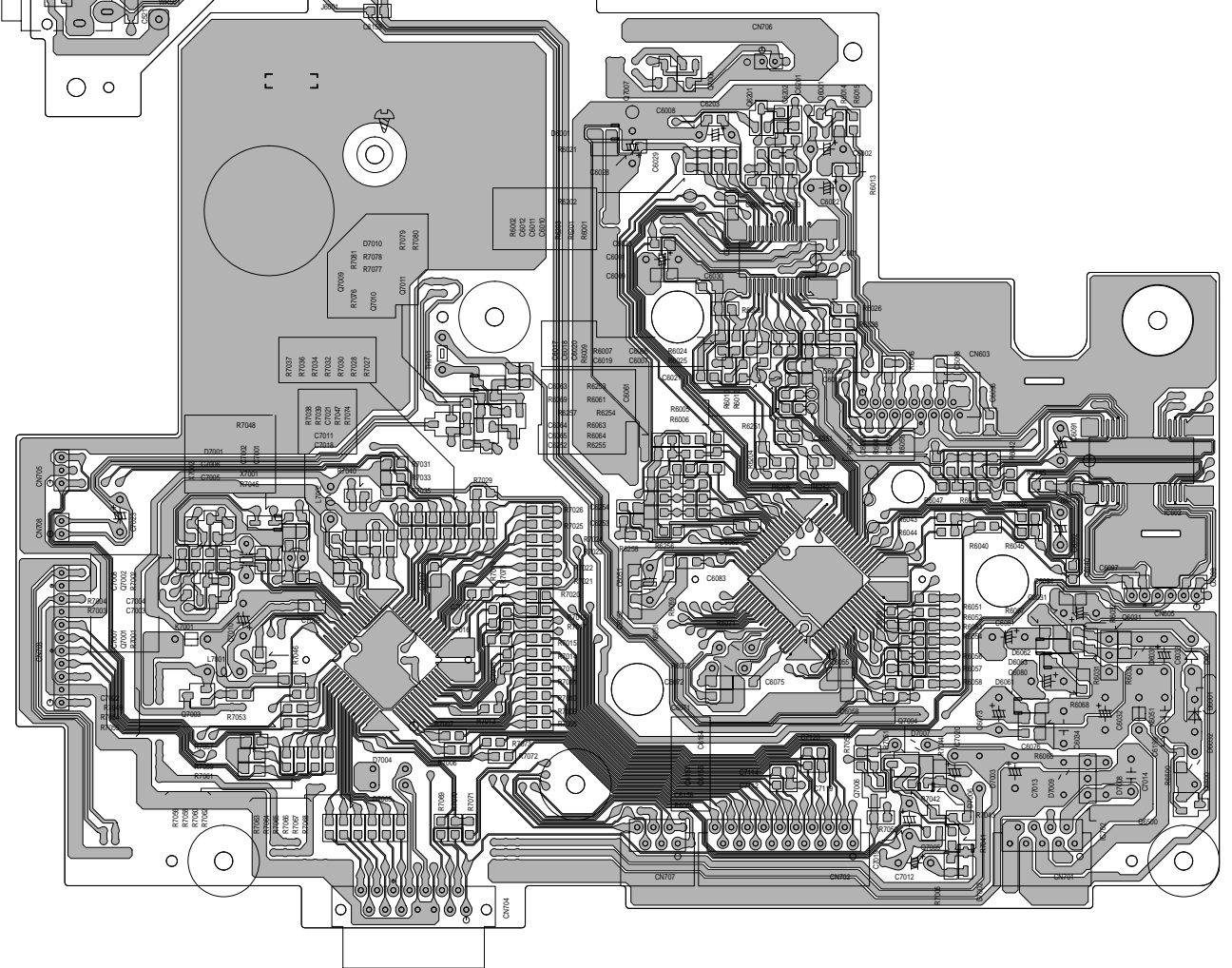
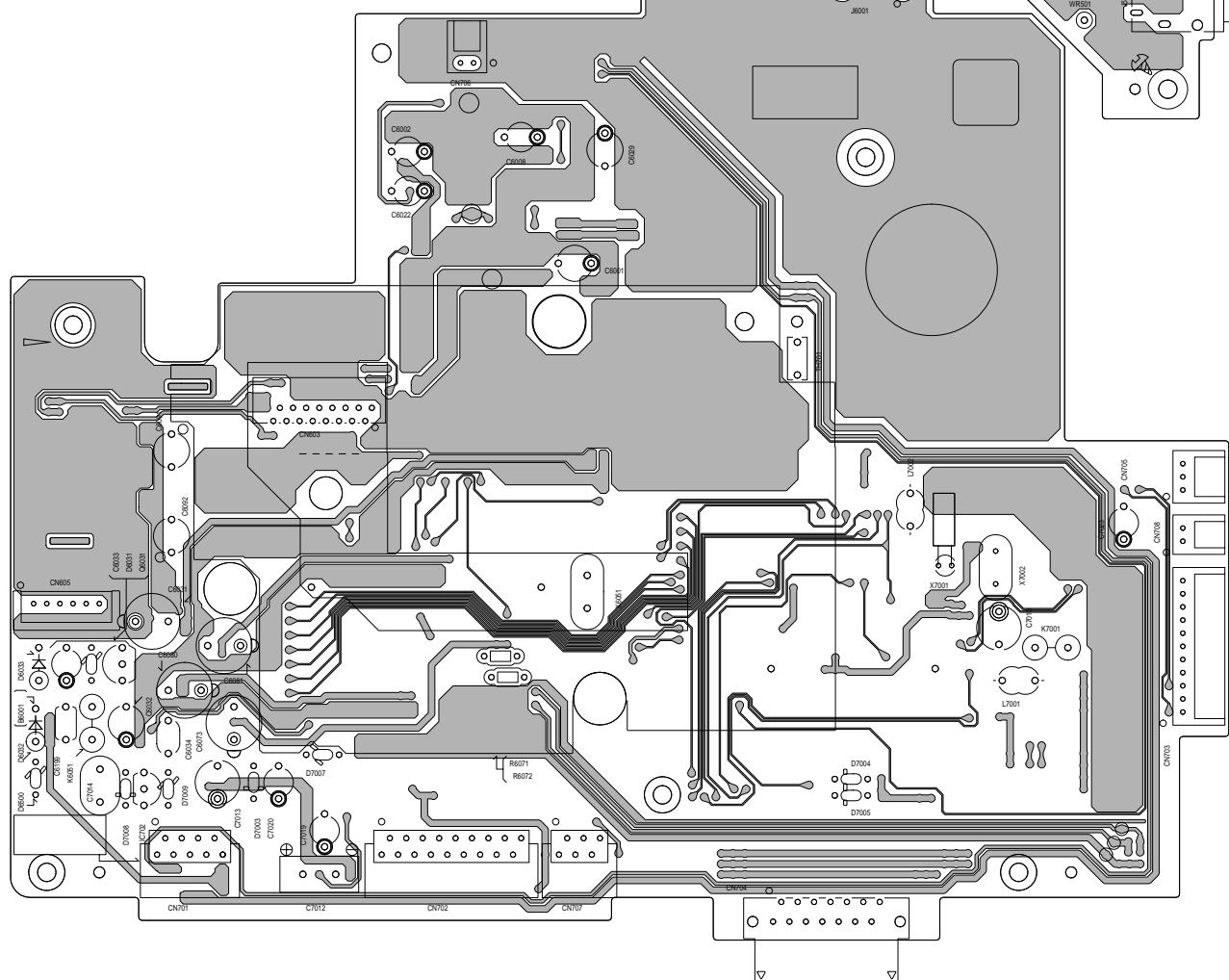
■ Sub board (forward side)

■ Line board (Reverse side)



■ CD servo board (Forward side)

■ CD servo board (Reverse side)



5
4
3
2
1

A

B

C

2-8

D

E

F

G

H